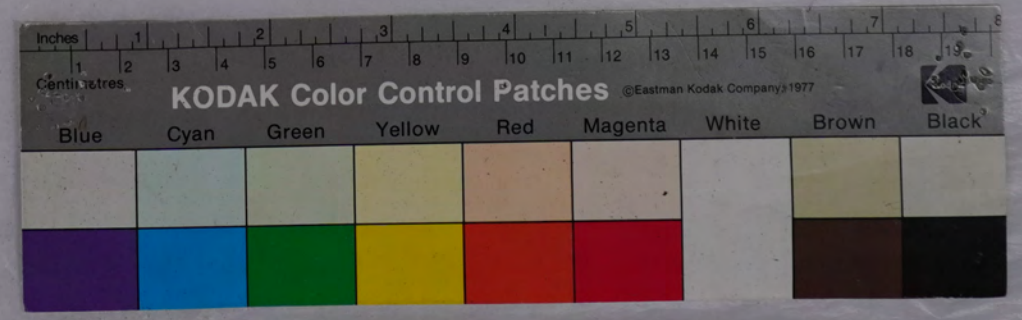




Handwritten Japanese text on aged paper, likely a historical document or record. The text is written in vertical columns on the left page and is mostly illegible due to fading and bleed-through from the reverse side. The right page is mostly blank with some faint markings.

木野愛宕神社所蔵史料

箱 4 - 6 2

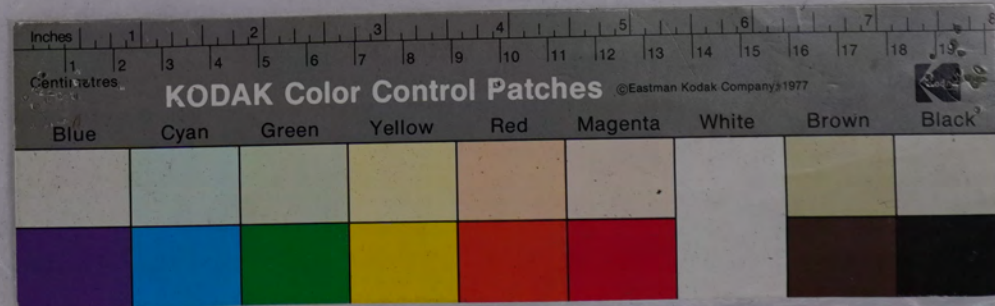




御奉行帳  
 右に記す如く  
 本所村  
 高下  
 平次郎

木野愛宕神社所蔵史料

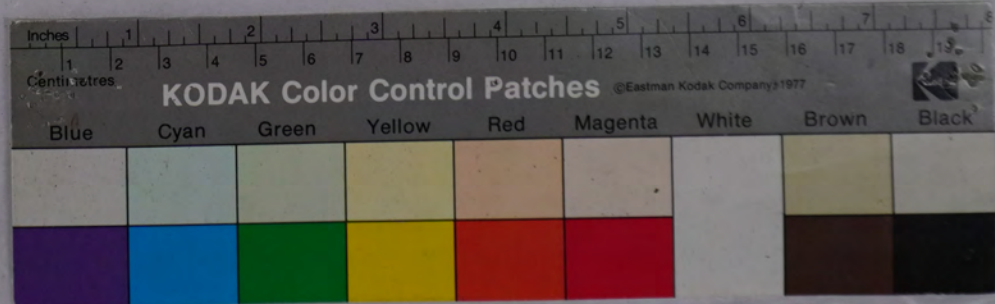
箱 4 - 6 2



Handwritten Japanese text in cursive (sōsho) style, located on the right page of an open book. The text is arranged in vertical columns, starting from the right edge and moving towards the center. The left page is blank.

木野愛宕神社所蔵史料

箱 4 - 6 2



Handwritten text in vertical columns on aged paper, likely a historical document or manuscript. The text is faint and difficult to read.

木野愛宕神社所蔵史料

箱 4 - 6 2

