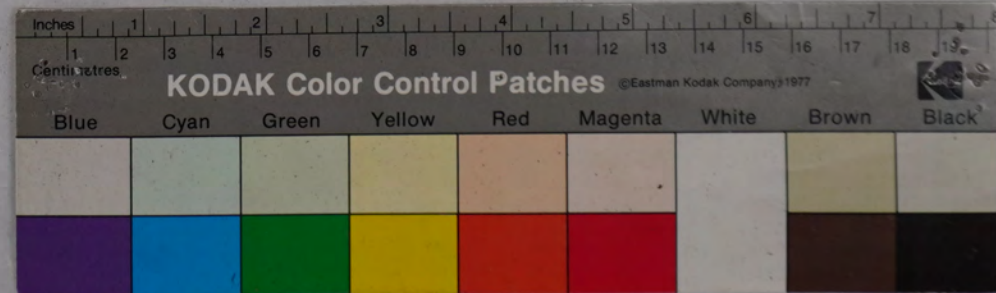


聖宮大権現
 野宮大明神
 御上喜遷宮室の御宮帳
 寛政元年乙酉月廿八日
 正嘉村
 新村

木野愛宕神社所蔵史料

箱 4 - 74



申上
 一 百月
 一 海百...
 申上...
 一 海百...

木野愛宕神社所蔵史料

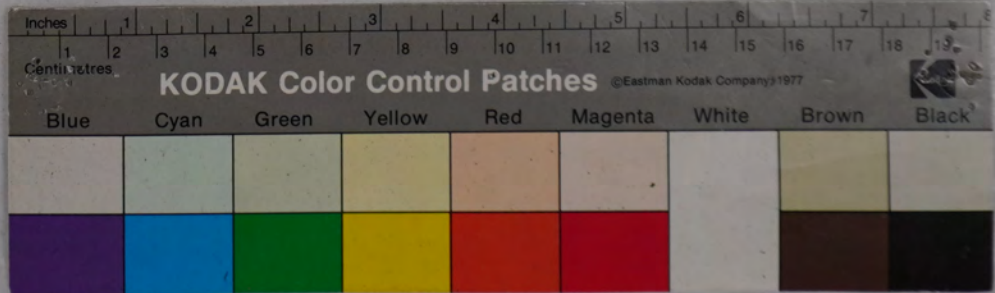
箱 4 - 7 4



Handwritten Japanese text on aged paper, likely a list or ledger. The text is arranged in vertical columns, with some entries preceded by numbers like '一' (one). The ink is dark and the paper shows signs of age and wear.

木野愛宕神社所蔵史料

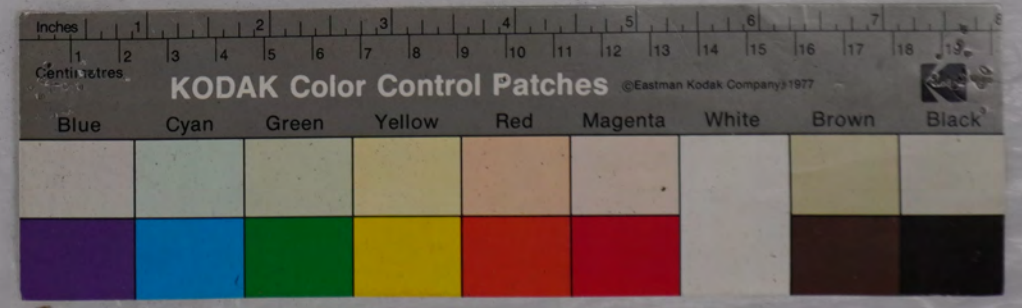
箱 4 - 74



Handwritten Japanese text on two pages of aged paper. The right page contains several vertical columns of text, including the characters '吉' and '大' on the right side. The left page also contains vertical columns of text, with some characters appearing to be '一', '二', '三', '四', '五', '六', '七', '八', '九', '十', '十一', '十二', '十三', '十四', '十五', '十六', '十七', '十八', '十九', '二十'.

木野愛宕神社所蔵史料

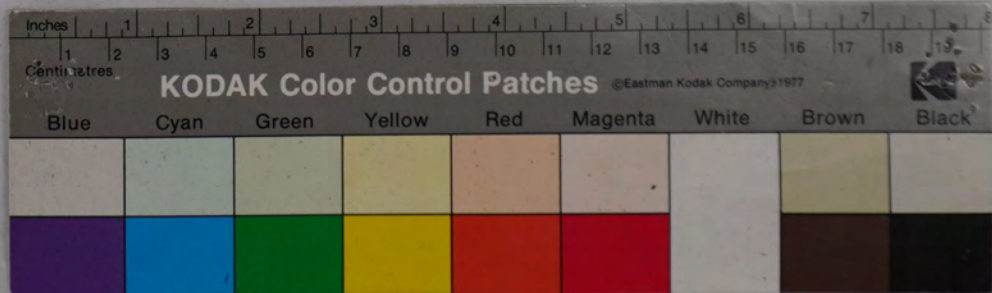
箱 4 - 7 4



Handwritten Japanese text on aged paper, organized into columns. The text includes various entries such as "一 一 一" and "一 一 一" with associated notes. A central vertical title is present, and a small box on the right contains the characters "五 勅書".

木野愛宕神社所蔵史料

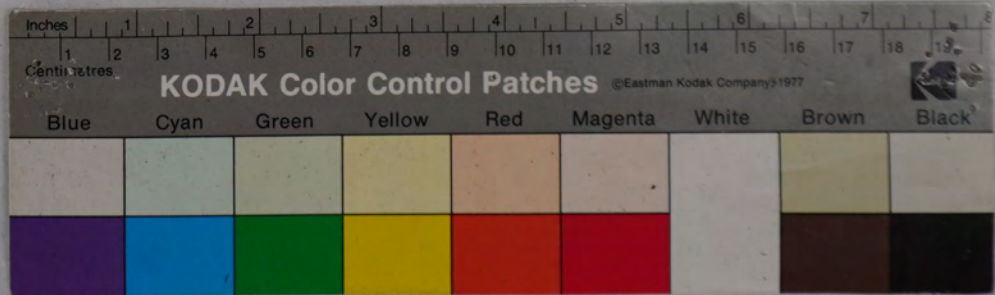
箱 4 - 7 4



Handwritten Japanese text in cursive (sōsho) style, organized into columns on two pages of aged paper. The text includes various characters and symbols, possibly representing names or titles.

木野愛宕神社所蔵史料

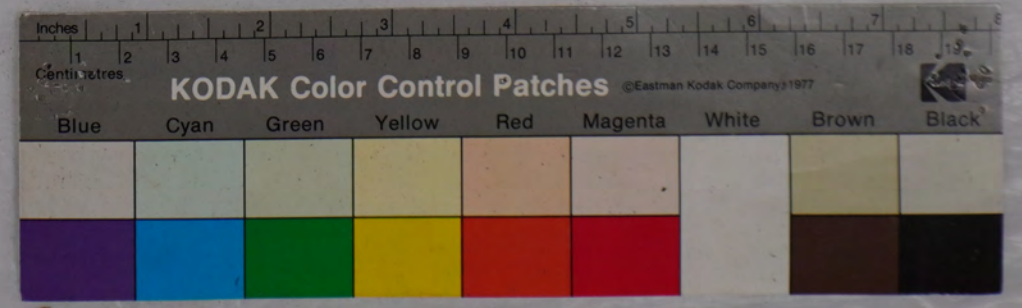
箱 4 - 7 4



Handwritten Japanese text in two columns on aged paper. The right page contains two columns of text, while the left page contains three columns. The characters are in cursive (sōsho) style. Some characters include the number '一' (one) followed by various names or titles.

木野愛宕神社所蔵史料

箱 4 - 7 4

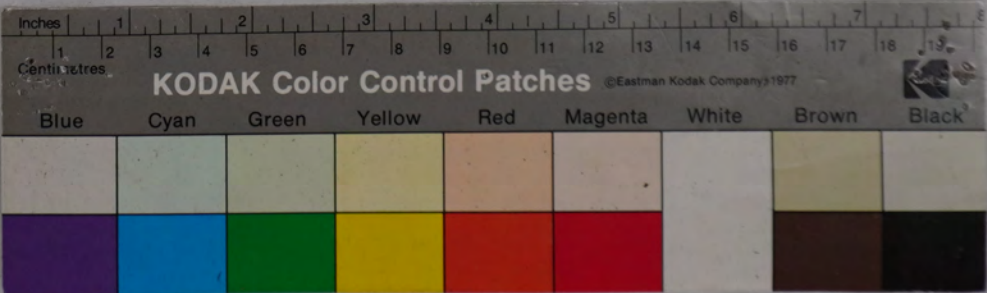


Handwritten text in Japanese cursive script (sōsho) on aged paper, organized in vertical columns. The text is arranged as follows from right to left:

- Rightmost column:** 物入 徳山 山崎 半三 又
- Second column:** 公 百 徳 山 崎 半 三
- Third column:** 山崎 半三
- Fourth column:** 山崎 半三
- Fifth column:** 山崎 半三
- Sixth column:** 山崎 半三
- Seventh column:** 山崎 半三
- Eighth column:** 山崎 半三
- Ninth column:** 山崎 半三
- Tenth column:** 山崎 半三
- Eleventh column:** 山崎 半三
- Twelfth column:** 山崎 半三
- Thirteenth column:** 山崎 半三
- Fourteenth column:** 山崎 半三
- Fifteenth column:** 山崎 半三
- Sixteenth column:** 山崎 半三
- Seventeenth column:** 山崎 半三
- Eighteenth column:** 山崎 半三
- Nineteenth column:** 山崎 半三
- Twentieth column:** 山崎 半三

木野愛宕神社所蔵史料

箱 4 - 7 4



Handwritten text on aged paper, likely a historical document or record. The text is written in vertical columns and includes characters such as 神, 宮, 祭, 祀, 所, 由, 記, 述, 等. There are also some faint sketches or diagrams on the left side of the page.

木野愛宕神社所蔵史料

箱 4 - 7 4

